



ARGWINGS KODHEK ROAD



enhancing lifestyle ●●

CORPORATE OFFICE:

Kings Developers Ltd.  
Saj Ceramics Complex, 2nd Floor,  
Opp. Cabanas Grounds,  
Embakasi, Mombasa Road,  
P.O. Box No. 18215-00500,  
Nairobi, Kenya.

Phone: +254 20-2044619/20

Mobile: 0729 459 277 | 0734 195020 | 07922 69962

Email: info@kingsdevelopers.com / sales@kingsdevelopers.com

[www.kingsdevelopers.com](http://www.kingsdevelopers.com)



DISCLAIMER: Perspectives shown in the Brochure are an artistic impression. The plans are subjected to changes / modifications / amendments (without notice) for better layout, as per suggestions of the Architects and/ or as per requirement of the Nairobi Council and / or all other concerned authorities. All the amenities, facilities etc., are subject to the approval of the concerned authorities and subject to the changes, if required. Some renderings and maps are artist's impressions and not actual depictions of the buildings or landscaping. A developer does not warrant or assume any legal liability or responsibility for the accuracy or completeness of any information disclosed.

Also Note: The Room Layout, Plans, Photos shown with Furniture and other electronic gadgets are for representation only for an easier visualization of the layout.

designs@frypangraphics.com



WHAT'S BETTER THAN A HOME THAT ENCAPSULATES  
A LITTLE BIT EXTRA ON COMFORT, PRIDE, AFFORDABILITY  
AND ALL THAT YOU NEED TO MAKE IT AN ADDRESS  
THAT ELEVATES YOUR EVERYDAY LIFE.

BARINI IS SITUATED IN THE HEART OF NAIROBI.  
IT ENSURES THAT YOU NEVER HAVE TO GO FAR TO ACCESS  
ALL THAT YOU WOULD EVER NEED.  
A HOME THAT WILL CUT DOWN ON YOUR TIME SPENT IN TRAFFIC  
AND INSTEAD PRESENT YOU WITH LEISURE TIME.



**BARINI**  
A DREAM HOME



enhancing lifestyle ●●

KINGS DEVELOPERS LIMITED SEEKS TO BUILD A BETTER LIFE FOR ITS CUSTOMERS,  
TO CREATE LANDMARKS OF EXEMPLARY QUALITY AND DESIGN THAT BENCHMARK  
THE HIGHEST STANDARDS OF INTERNATIONAL LIVING.

A PROJECT BY KINGS DEVELOPERS LIMITED

*Shaping the skyline of Kenya!*



# The Design

EVOKING A PROUD SENSE OF OWNERSHIP  
THE LAYOUT OF RESIDENCES AT BARINI  
ARE A UNIQUE COMBINATION  
OF RELAXED AND COMFORTABLE LIVING.



# The Look

LIFE IS A CELEBRATION THAT SHOULD BE EXPERIENCED EVERY DAY. IT'S TIME TO CHOOSE THE EXCLUSIVE BARINI AFTER ALL, TRIUMPH GIVES YOU LIBERTIES, AND LIBERTIES ENSURE CHOICE. JOIN THE BARINI COMMUNITY IN THE CELEBRATION OF EXCLUSIVITY!





# The Spaces

ENJOY SPACIOUS LIVING, GREAT VIEW AND COOL BREEZE. THE PERFECTLY ALIGNED HOMES PROMISE GREAT AIRFLOW; WITH WELL-VENTILATED BATHROOMS, SMARTLY PLANNED LAYOUT FOR OPTIMUM SPACE UTILIZATION, THE RESIDENCES ARE DESIGNED FOR COMFORT LIVING. THE SPACIOUS HOMES EXUDE CHARM FROM EVERY CORNER!



# The Lifestyle

STAY FIT, STAY RELAXED AND RECONNECT.

A PLACE WHERE PREOCCUPATION OF WORK FADES.

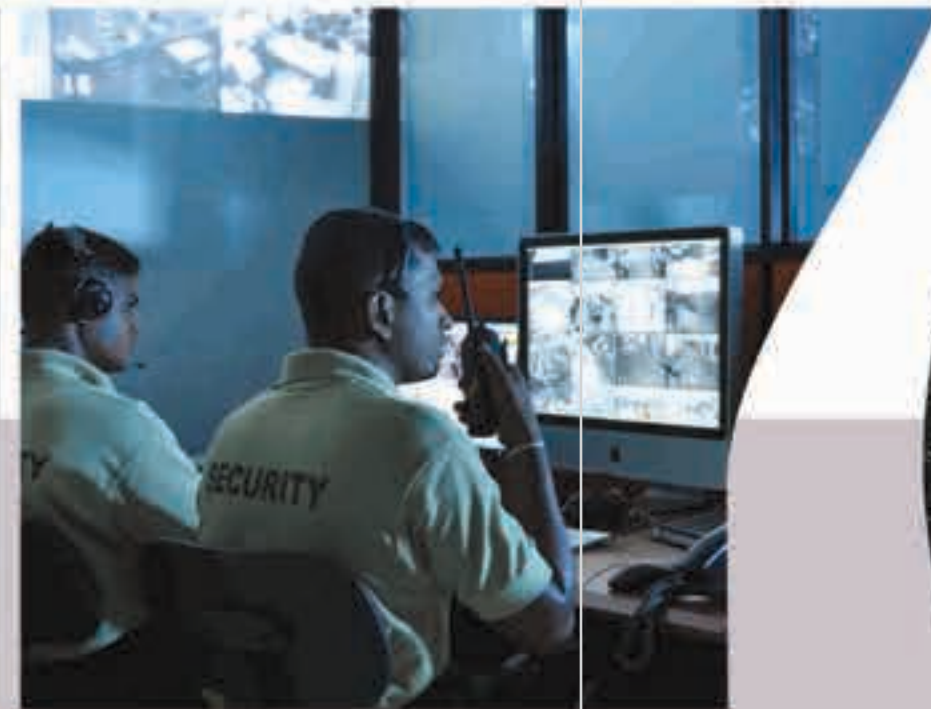
ITS TIME TO REJUVENATE AT THE BARINI POOL & GYM.





# The Benefits

THE PROJECT IS DESIGNED KEEPING IN MIND SECURITY, ECO-FRIENDLINESS, POWER BACKUPS AND HOST OF OTHER COST SAVING MEASURES FOR THE LONG TERM BENEFITS OF THE SOCIETY.



## THE PROJECT COVERS:

- CCTV IN COMMON AREAS
- HIGH SPEED ELEVATORS
- 24 HOURS SECURITY
- PROVISION FOR INVERTORS
- ECO FRIENDLY SOLAR WATER HEATING SYSTEM
- GENERATOR BACK FOR COMMON AREAS
- BOREHOLE FOR WATER
- ANTI TERMITE TREATMENT TO THE FOUNDATION



# The Plan

EACH APARTMENT HAS 3 SIZEABLE BEDROOMS ALL EN-SUITE.  
MASTER BEDROOM INCLUDES WALK IN WARDROBES, SEPARATE CLOAKROOM.  
A SPACIOUS LOUNGE WITH DINING AND A LARGE KITCHEN FITTED WITH  
HIGH QUALITY FINE VENEERED MDF CUPBOARDS + DSQ.

THE 3 BEDROOMS APARTMENT LAYOUT



# The Plan

BRILLIANTLY PLANNED SPACES A SIGNATURE STYLED BY KINGS DEVELOPERS REFLECTS IN OUR PREMIUM DUPLEX APARTMENTS AT BARINI TOO. GREAT LAYOUT DESIGN, LUXURY AND STYLE. THESE HOMES IMBUED WITH THOUGHTFUL PLANNING ARE AVAILABLE FOR A SELECTED FEW.

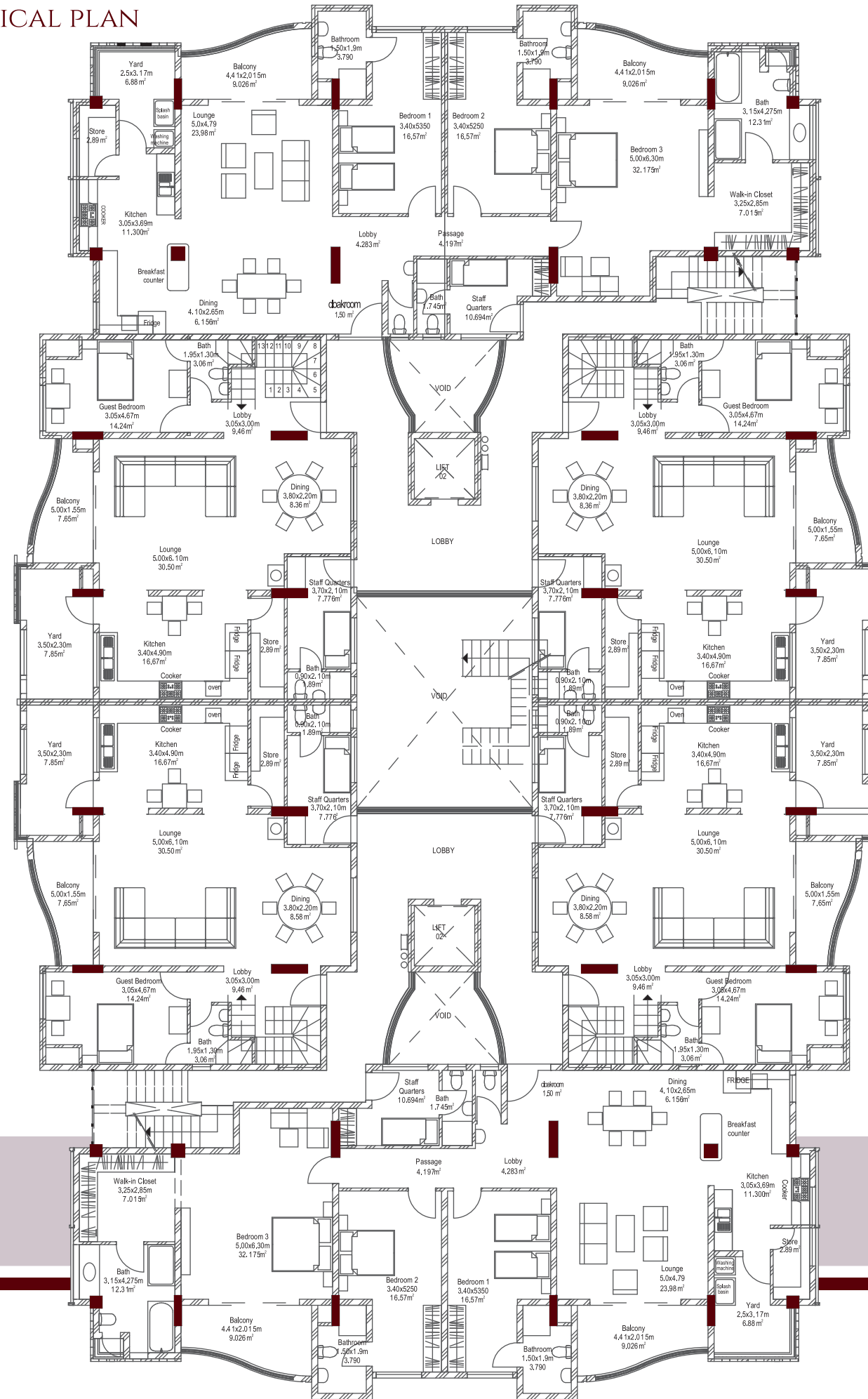
PREMIUM DUPLEX APARTMENTS  
[3 BEDROOMS (ALL ENSUITE) + LIVING AREA] DUPLEX UPPER FLOOR



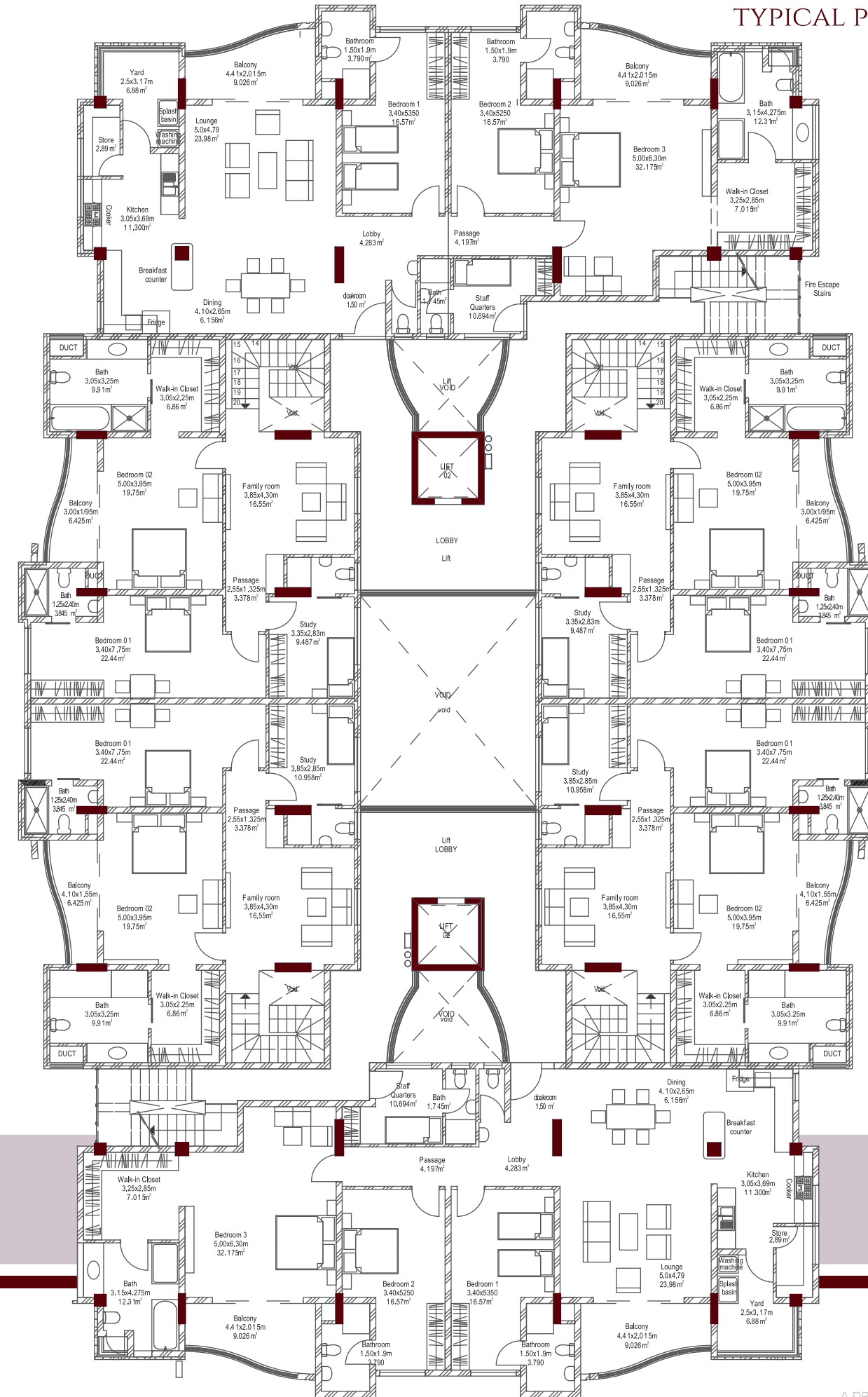
PREMIUM DUPLEX APARTMENTS  
1 BEDROOM + DSQ ON LOWER FLOOR



# ODD FLOOR TYPICAL PLAN



# EVEN FLOOR TYPICAL PLAN



# The Finish

## PROJECT AMENITIES:

CCTV IN COMMON AREAS  
HIGH SPEED ELEVATORS  
ANTI TERMITE TREATMENT TO THE FOUNDATION  
SWIMMING POOL  
GYM  
SOLAR WATER HEATING - ECO FRIENDLY  
INTERCOM SYSTEM  
MULTI PURPOSE COMMUNITY HALL  
GENERATOR BACK UP FOR COMMON AREA  
PROVISION FOR INVERTORS  
2 CAR PARKS AVAILABLE PER UNIT  
BOREHOLE  
FIRE FIGHTING SYSTEM  
CONCEALED WIRING  
MCB & FCCB'S

## PROJECT FINISH:

FULLY FURNISHED APARTMENTS  
SOLID WOODEN DOOR WITH SAFETY LOCK  
VITRIFIED TILES  
ALL ENSUITES  
PRIVATE FLOORS FOR SPECIFIC APARTMENTS  
SUPERIOR QUALITY PAINT  
UPVC WINDOWS  
ANTI SKID FLOORING TILES IN BALCONY  
PROVISION FOR CABLE TV  
SEPERATE ACCESS FOR SERVANTS ROOM

## KITCHEN:

OPEN PLAN MODULAR KITCHEN  
QUARTZ STONE PLATFORM WITH SS SINK  
TILE DADO ABOVE THE PLATFORM

## BATHROOM:

GERMAN SANITARY FIXTURES & FITTING  
TURKISH BATHROOM ACCESSORIES  
ITALIAN DESIGN SANITARY WARE

# The Location

## LOCATION ADVANTAGE:

- 5 MINS AWAY FROM YAYA CENTER
- 10 MINS DRIVE TO CITY CENTER
- WALKING DISTANCE TO LOT OF SCHOOLS... KILIMANI PRIMARY SCHOOL, FRENCH SCHOOL, CAVINAS SCHOOL...
- NESTED IN POSH AREA WITH BANKS, HOSPITALS, MALLS, SCHOOLS & CORPORATE HOUSES.
- GOOD WATER SUPPLY & SEWERAGE SYSTEM IN THE NEIGHBORHOOD
- 5 MINS AWAY FROM KILIMANI POLICE STATION
- 2 MINS TO NEAREST BUS STOP AND EASY ACCESS TO PUBLIC TRANSPORT SYSTEM



SITE ADDRESS:  
ARGWINGS KODHEK ROAD, NAIROBI