



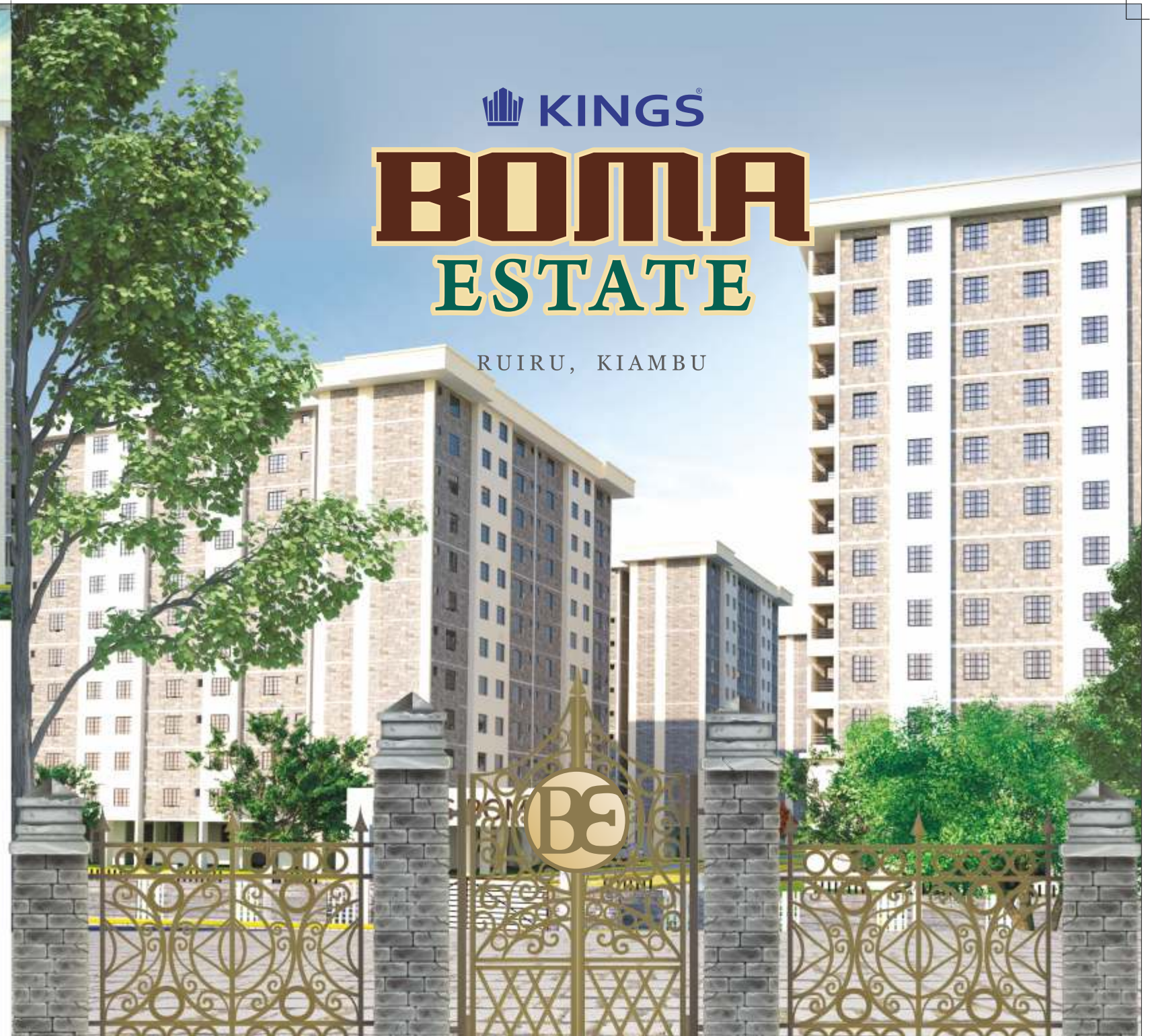
## LOCATION ADVANTAGES

- 4 Min to Thika Super Highway • 10 Min to Tatu City Residency
- 11 Min to Spur Mall Ruiru • 6 Min to Ruiru Police station
- 4 Min to Ruiru Main Market • Major Public Transport Routes to Thika and Nairobi
- Convenient to Nearest Banks and Fuel stations
- Nearby Hospital facilities such as Nazareth Hospital and Kenyatta University Teaching Referral and Research Hospital.
- Choices of many good schools in the locality such as Njema Primary Academy and Ruiru Peak Academy.
- Nearby educational institutions such as Zetech University, Kiambu Institute of Science and Technology and Jomo Kenyatta University of Agriculture and Technology.
- Nearby Sports facilities such as Moi International Sports Centre and Kiambu Sports club.



SCAN HERE FOR  
GOOGLE MAP

**KINGS**  
**BOMA**  
**ESTATE**  
Ruiru, Kiambu



**KINGS**  
**BOMA**  
**ESTATE**

RUIRU, KIAMBU

**BOMA YANGU, NYUMBA YANGU!**

A PROJECT BY  
**KINGS**  
DEVELOPERS LIMITED

enhancing lifestyle

CONTACT US:  
**0700 090060**  
**sales@kingsdevelopers.com**  
**www.kingsdevelopers.com**



ISO 9001: 2015 CERTIFIED



A PREMIUM  
AFFORDABLE  
HOUSING PROJECT

A PROJECT BY  
**KINGS**  
DEVELOPERS



DISCLAIMER: Perspectives shown in the Brochure are an artistic impression. The plans are subjected to changes / modifications / amendments (without notice) for better layout, as per suggestions of the Architects and/ or as per requirement of the Nairobi Council and / or all other concerned authorities. All the amenities, facilities etc., are subject to the approval of the concerned authorities and subject to the changes, if required. Some renderings and maps are artist's impressions and not actual depictions of the buildings or landscaping. A developer does not warrant or assume any legal liability or responsibility for the accuracy or completeness of any information disclosed.

Also Note: The Room Layout, Plans, Photos shown with Furniture and other electronic gadgets are for representation only for an easier visualization of the layout.

The ideal home right  
at the heart of Ruiru.



We're the key  
to your new home



There is nothing better than a home that encapsulates a little bit of comfort, natural scenery and all round convenience. That is what Kings Boma Estate offers. A home that epitomizes modern living and convenience right at the heart of Ruiru town.

A home that epitomizes modern living and convenience right at the heart of Ruiru town.

Kings Boma Estate is a hearty project coming up in Ruiru, that will be a home you will be proud to own. Anything that you will require will be within your reach.

 **KINGS**  
**BOMA**  
ESTATE

[www.kingsdevelopers.com](http://www.kingsdevelopers.com)

We're the key  
to your new home



A Serene and  
Tranquil Environment  
for your family

## The Fun Estate, The Green Estate

- Green spaces & Attractive Landscaping throughout the project
- Secured boundary wall
- Borehole
- Anti-termite foundation
- One parking per apartment
- Cabro paved driveways
- Community Hall for the Society use.
- Outdoor Kids Play area



 **KINGS**  
**BOMA**  
**ESTATE**

[www.kingsdevelopers.com](http://www.kingsdevelopers.com)

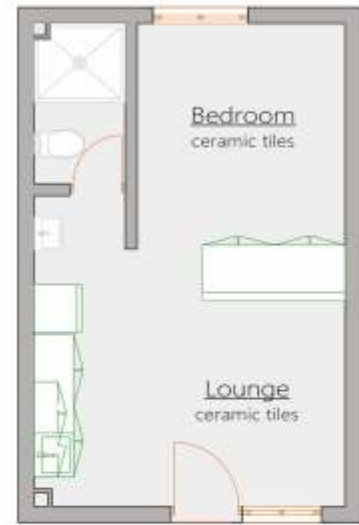
## The SMART Estate



- Solar street lighting and solar lights in all common areas
- Controlled Access and well-planned security check points
- WIFI provisions
- Provision for TV points
- CCTV at entry and exit point
- Provision for gas cylinders in kitchen yard



**LAYOUT PLAN**  
Studio Apartment 25 sq m  
Studio - 40 units

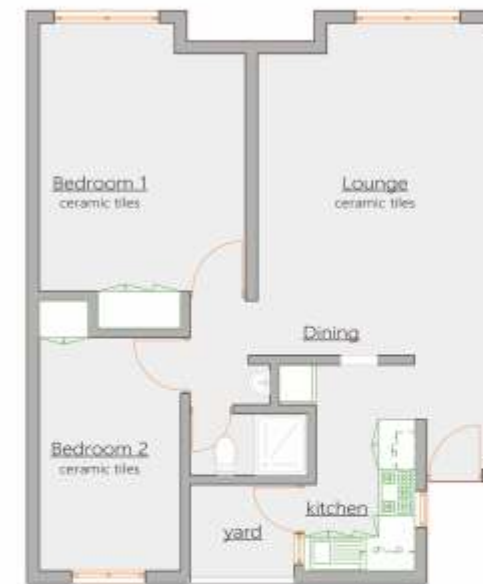


**KINGS**  
**BOMA**  
**ESTATE**

Kings Boma Estate has 1050 units of studio, 1, 2 & 3 BHK apartments, which are modern, cross ventilated, well spaced out. A real deal to buy.

**1050 UNITS**

**LAYOUT PLAN**  
2 BHK Standard Apartment 64 sq m  
2BDR with standard  
504 units



**LAYOUT PLAN**  
1 BHK Apartment 30 sq m  
1BDR - 30 units



**LAYOUT PLAN**  
2 BHK Ensuite Apartment 75 sq m  
2BDR with ensuite  
336 units



**LAYOUT PLAN**  
2 BHK Small Apartment 40 sq m  
2BDR with small - 60 units



**LAYOUT PLAN**  
3 BHK Ensuite Apartment 85 sq m  
3BDR - 80 units

